

# Downloading LogiCola

You'll do computer homework exercises using the LogiCola program, which runs in Windows, Macintosh, or Linux. To download LogiCola, go to either of these:

<http://www.harryhiker.com/lc>  
<http://www.harrycola.com/lc>

<p>Windows</p>  <p>Click where it says "click here."</p>	<p>Macintosh</p>  <p>Click "Macintosh" at the top of the page.</p>	<p>Linux</p>  <p>Click "Linux" at the top of the page.</p>
---	---	---

If you want to run LogiCola:

- on a single computer: then just install it to that computer.
- on several computers: then install it to a USB flash drive.



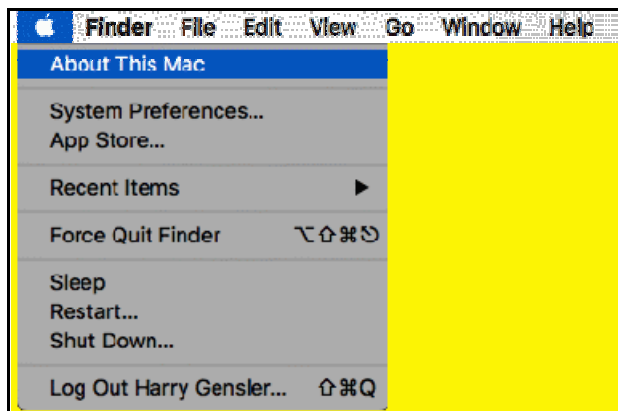
After you install LogiCola, click the cola-can icon to start the program. At quiz time, use the TOOLS menu to send your scores to your teacher by e-mail.

---

---

## Macintosh Directions

**(Step 1 - OS)** Check which version of the operating system (OS) you have, and write it down. To do this, click the apple and then "About This Mac":



The ABOUT BOX on my Mac Mini says I have OS 10.12.2:



• If you have an OS of Catalina (OS 10.15) or above then sorry, the free Wine.app method described in the rest of this handout won't work. Your best option then is to install either of two commercial programs, CROSSOVER (<https://www.codeweavers.com/products/crossover-mac>) or PARALLELS (<https://www.parallels.com/products/desktop>); each enables you to run Windows programs on your Mac - and using these programs you'd install LogiCola as you would on a Windows computer (from <http://www.harryhiker.com/lc> or <http://www.harrycola.com/lc>). *With OS 10.15 or above, you can ignore the rest of these instructions, since the free Wine.app program won't work on your system unless Kronenberg updates his Wine.app to these newer operating systems.*

• If you have OS 10.6 or above (like 10.8 or 10.10 or 10.12.6), but less than 10.15, you're OK and can go to the next step.

• If you have OS 10.4 or above, but less than 10.6, you're OK if the "about box" says that you have an Intel processor - but you can't run LogiCola if you don't have an Intel processor. These Macs are pretty old (roughly 2005 to 2009).

• If you have OS less than 10.4, you can't run LogiCola, sorry. These Macs are very old.

**(Step 2 - rootless)** If your OS is 10.11 or above, you may have to disable rootless to allow other programs to run. Restart your computer, hold down the **COMMAND and R keys** while your computer is restarting, and release these keys when you see the apple. This boots you into recovery mode. Go to the menu bar and click UTILITIES and then TERMINAL. In Terminal, type **csrutil disable** and hit enter. A message like this indicates success: "Successfully disabled System Integrity Protection. Please restart the machine for the change to take effect." Then restart your computer again.

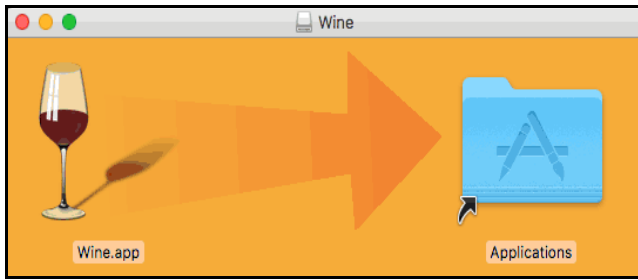
FURTHER INFORMATION: Here are related Terminal commands: **reboot** restarts your computer, **csrutil status** shows whether System Integrity Protection is on or off, and **csrutil enable** turns rootless on (which you can do after you install LogiCola). If you're using a Windows keyboard (as I do with my Mac Mini), then use Win-R instead of Command-R.

**(Step 3 - gatekeeper)** If your OS is 10.7.5 or above, you may have to disable gatekeeper to allow other programs to run. Go to SYSTEM PREFERENCES (SETTINGS) under the apple menu) and change your SECURITY AND PRIVACY (under GENERAL) setting to allow applications downloaded from ANYWHERE (if you have this option).

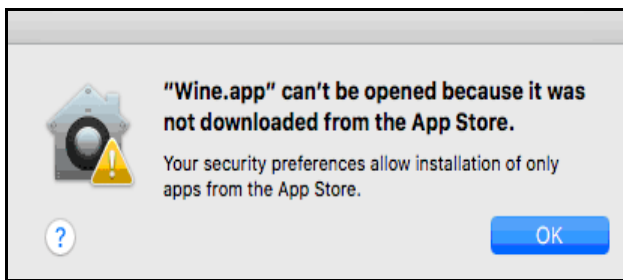
NOTES: If these options are dimmed, then you might have to click at the bottom where it says "Click the lock to make changes"; then it will ask for your password.

**(Step 4 - Wine.app)** Now you install the free Wine.app program; this uses Wine emulation to run Windows programs on your Mac. Using Safari (I suggest you don't use Chrome), go to Mike Kronenberg's WineBottler download page <http://winebottler.kronenberg.org/downloads> and scroll down toward the bottom (**don't click the WineBottler versions - you want Wine.app**). If your OS is 10.6 or above, then download **Wine 2.0** or **Wine 1.8.6** (for an older OS, download **Wine 1.4**). After this downloads, which may take several minutes, click

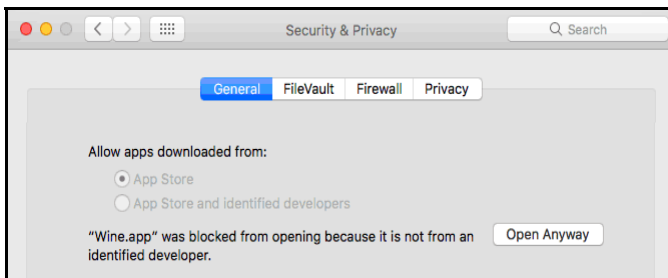
this file (which will end in **.dmg**) from your **DOWNLOADS** folder; then a box will invite you to install Wine.app by dragging the wine-bottle icon into the Applications folder (you can ignore the readme.rtf file):



If you get no complaint, then Wine.app is installed - and then you should then open the **APPLICATIONS** folder and double-click the Wine.app program to start it. But you might get a complaint like this:



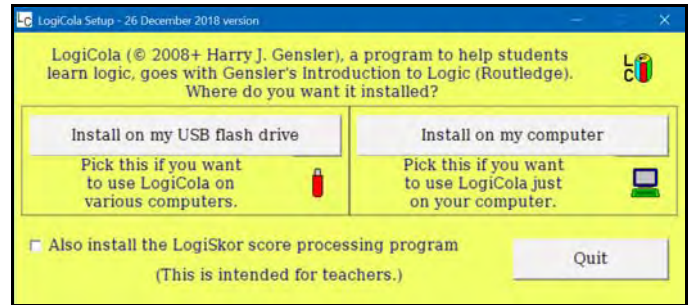
If you get a complaint like this, then first click **OK** and then return to the **SECURITY & PRIVACY** box (which you can get by picking **SYSTEM PREFERENCES (SETTINGS)** under the apple menu); the box may look like this:



Click **OPEN ANYWAY** at the bottom. If you're asked the same question again, click the **OPEN** button again. Finally, go back to the **APPLICATIONS** folder and double-click the Wine.app program to start it. You should then see the little wine-glass icon on the menubar at the top of the screen, which indicates that you can now run Windows programs - like LogiCola.



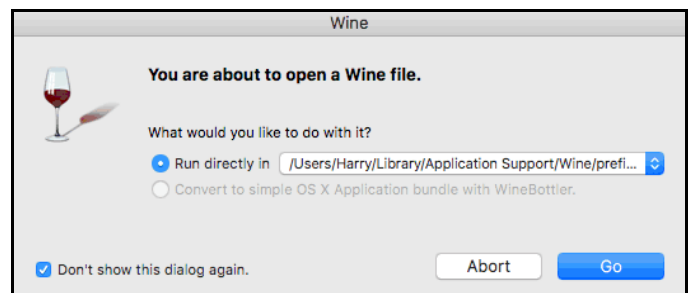
**(Step 5 - LogiCola Setup)** Using Safari (I suggest you don't use Chrome), go to <http://www.harryhiker.com/lc> or <http://www.harrycola.com/lc> to download the Windows LogiCola Setup program; click where it says "CLICK HERE." If all goes well, the **lcsetup.exe** file will go to your downloads folder. When you click this file, a **LogiCola Setup** box pops up:



Toward the bottom, you can check a box to also install the LogiSkor score processing program (for teachers). Toward the top, you can choose to install on a **USB FLASH DRIVE** (which you can use with various computers, including Windows computers and Macs-with-Wine) or **ON MY COMPUTER** (which most people will want to do). In the latter case, you'll end up with a LogiCola.exe icon on your desktop (which you can click to start LogiCola), a LogiSkor.exe icon for the scoring program (if you checked the box to install this), and an LC folder for your scores and other supporting files (you must keep the program and folder together, but you can put them together into another subfolder if you'd like):



To run LogiCola, double-click the LogiCola.exe file; be patient, since sometimes it takes many seconds to open. The first time you run the program, you may get this box (where "Wine files" are Windows programs):



Just select **RUN DIRECTLY**, check **DON'T SHOW THIS DIALOG AGAIN**, and click **GO**. LogiCola should run the same as it does on a Windows computer.